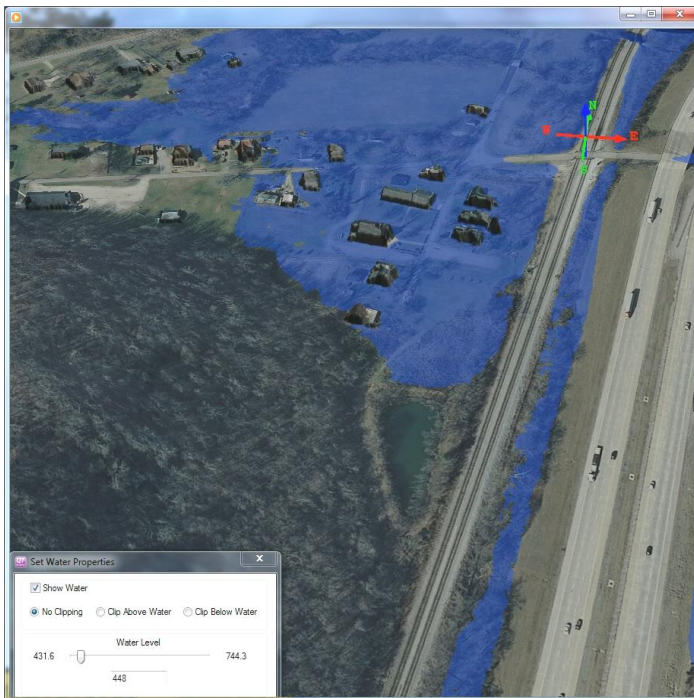




Judge/Executive
Harry L. Berry

Our County Introduces a Geographic Information System (GIS)

We all use GIS every day! In our modern world, we rely heavily on technology to display maps, directions, and locations. Even your smartphone uses GIS when you search for directions or an address. In order to provide accurate information, your county government recently invested in several different computer programs to comprise our county's GIS. Our GIS Coordinator developed and deployed an online program for county residents to view floodplains, fire districts, school districts, and PVA parcel identification numbers on our website.



A LiDAR Model of Flooding in Colesburg

Our second GIS program allows the engineering staff to view, query, and analyze new LiDAR (light detection and ranging) data. LiDAR is very complex and precise point data created by an airplane flying over the land and using light beams to collect data about the land such as: elevation, building footprints, type of vegetation, and flood modeling. This new LiDAR data allows the county to better prepare for natural disasters (such as floods and tornadoes), view current building footprints for planning and development purposes, and assist in the design of drainage plans for future residential and commercial developments.

Our county engineering staff maintains data on current road projects, future commercial and residential developments, storm water drainage and runoff, FEMA floodplain designations, contour elevation data, LiDAR point cloud data, and many more spatial datasets. With this information our engineering staff is able to support our E-911 Dispatch Center, EMS (Ambulance Services), Road Department, Emergency Management, Planning & Development Commission, and you, the residents of Hardin County.

The Hardin County Engineering department prepared a fee structure to make some of this data commercially available to local engineering and consulting firms. The fees collected from the data sales help to fund future contracts to obtain new LiDAR data and aerial photography.



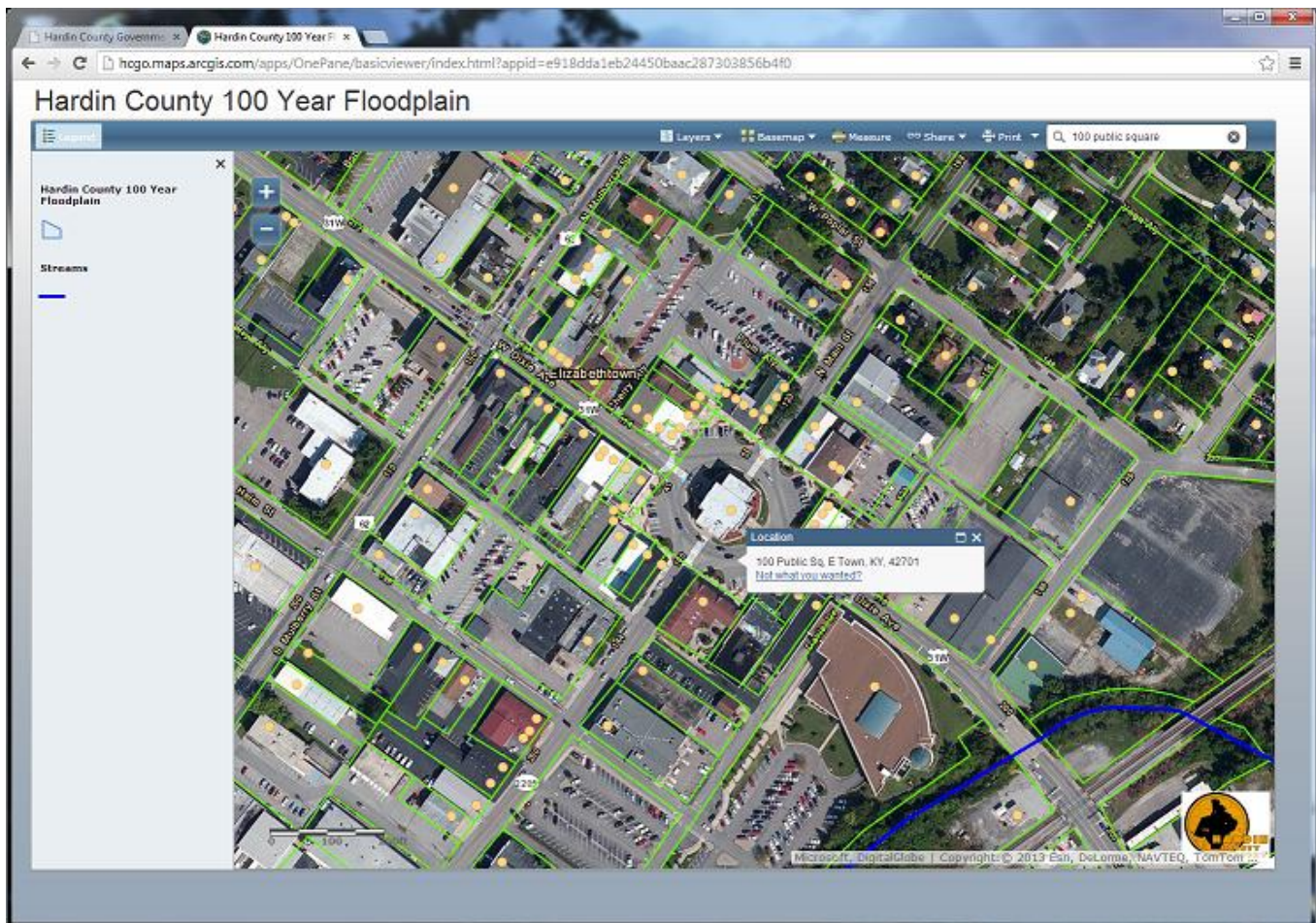


What Does GIS Mean for You?

You might ask, "What does this mean for me?" Well, we established a GIS portal allowing you to view this information on our website. Just log on to www.HCKY.org, click the "Department" tab at the top of the page, then click the "GIS" link within the department tab menu. At our county GIS homepage, you will find several different links at the bottom of the page. Each one of the links will direct you to an application specifically designed for you. The applications can answer your questions such as:

- ✓ Is my house/business near the floodplain?
- ✓ What fire district am I in, and which fire department responds to my house?
- ✓ Which school district am I in, and where is the closest school?
- ✓ I want to search my property by parcel number.

Daniel Hendren, Jr., GISP, Hardin County's GIS Coordinator is happy to answer any questions you may have about GIS technology and our website access. Just call my office at (270)765-2350 and ask for Danny.



View from our website of Hardin County's Floodplain Application